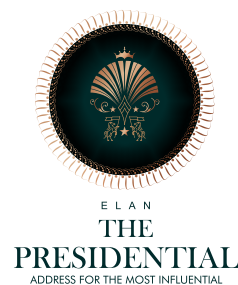




e|**l**|**m**|**n**®  
BUILDING THE FUTURE

The Group has recognised the potential of the Indian realty sector and looks forward to contributing to its growth through ultra-luxury and cost-effective residential, retail, commercial & hospitality properties. Through wide-ranging expertise, it offers unique projects, pricing, and services exclusively to its patrons. The Group is developing cutting-edge designs that will bring a major positive transformation in the Indian real estate sector. It aims at creating connections between discerning individuals and intelligent spaces to create exciting new prospects. This includes adopting breakthrough innovations, exploring new technologies and researching potential future spaces.

BUILDING THE FUTURE



SECTOR 106  
DWARKA EXPRESSWAY  
GURUGRAM

SECTOR 106  
DWARKA EXPRESSWAY  
GURUGRAM

SECTOR 66  
GOLF COURSE EXT. ROAD  
GURUGRAM

SECTOR 50  
NIRVANA COUNTRY  
GURUGRAM

SECTOR 70  
EXTENDED GOLF COURSE EXT. ROAD  
GURUGRAM

SECTOR 84  
DWARKA EXPRESSWAY  
GURUGRAM

SECTOR 67  
MAIN SOHNA ROAD  
GURUGRAM

SECTOR 80  
MAIN NH 8  
GURUGRAM

PROJECTS

DELIVERED / DELIVERED CONCEPT BASED / UNDER DEVELOPMENT / RESIDENTIAL



SECTOR 106  
DWARKA EXPRESSWAY  
GURUGRAM

ONE OF THE *biggest*  
**WATERFRONT**  
*retail*

IMAGE USED IS FOR REFERENCE PURPOSE ONLY



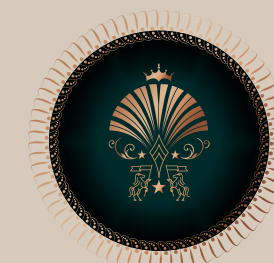
PROJECTS

DELIVERED / DELIVERED CONCEPT BASED / UNDER DEVELOPMENT / RESIDENTIAL

THE PRESIDENTIAL – RESIDENTIAL



SECTOR 106  
DWARKA EXPRESSWAY  
GURUGRAM



ELAN  
THE  
PRESIDENTIAL™  
ADDRESS FOR THE MOST INFLUENTIAL

A NEW DEFINITION OF *luxury living*  
& A SYMBOL OF *superiority*





PROJECTS

DELIVERED / DELIVERED CONCEPT BASED / UNDER DEVELOPMENT / RESIDENTIAL



SECTOR 66  
GOLF COURSE EXT. ROAD  
GURUGRAM



SECTOR 50  
NIRVANA COUNTRY  
GURUGRAM

- HIGH-END RETAIL
- FOOD COURT
- TERRACE RESTAURANTS
- OFFICE SPACE



- HIGH-END RETAIL
- FOOD COURT
- TERRACE RESTAURANTS
- ENTERTAINMENT ZONE
- MULTIPLEX



PROJECTS

DELIVERED / DELIVERED CONCEPT BASED / UNDER DEVELOPMENT / RESIDENTIAL



ELAN  
**EPIC**<sup>®</sup>  
*this is it.*

SECTOR 70  
EXTENDED GOLF COURSE EXT. ROAD  
GURUGRAM

- HIGH-END RETAIL
- HANGING PODS
- TERRACE RESTAURANTS
- FOOD COURT
- MULTIPLEX
- ENTERTAINMENT ZONE
- GYM SPACE



ELAN  
**MIRACLE**<sup>®</sup>

SECTOR 84  
DWARKA EXPRESSWAY  
GURUGRAM

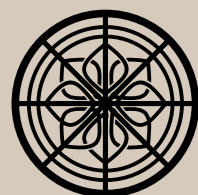
- HIGH-END RETAIL
- FOOD COURT
- RESTAURANTS
- ANCHOR SPACES
- ENTERTAINMENT ZONE
- MULTIPLEX
- SERVICED APARTMENTS
- OFFICE SPACES





PROJECTS

DELIVERED / DELIVERED CONCEPT BASED / UNDER DEVELOPMENT / RESIDENTIAL



ELAN  
TOWN  
CENTRE®

SECTOR 67  
MAIN SOHNA ROAD  
GURUGRAM



SECTOR 80  
MAIN NH 8  
GURUGRAM

PREMIUM RETAIL  
FOOD COURT  
ENTERTAINMENT ZONE  
MULTIPLEX



PREMIUM RETAIL  
FOOD COURT  
MULTIPLEX  
SERVICED APARTMENTS  
CLUB HOUSE



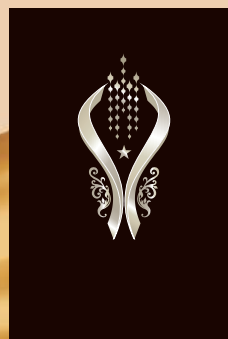




P R E S E N T I N G



ELAN  
**IMPERIAL**<sup>™</sup>  
a whole new world



# 1<sup>ST</sup> LUXURY MALL OF GURUGRAM



# ONE OF THE MOST REVOLUTIONARY COMMERCIAL CONCEPT EVER





*Elan Imperial is  
a world within itself*



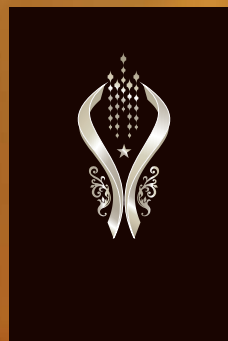


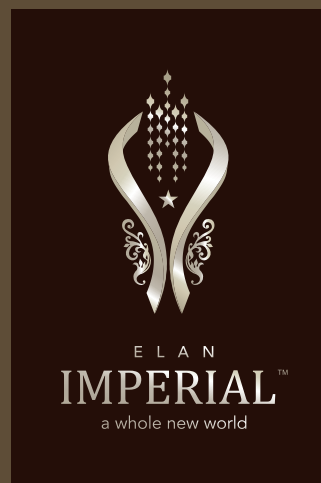
IMAGINED BY THE VISIONARIES,  
REALISED BY PERFECTIONISTS





# THE LOCATION





MAP NOT TO SCALE





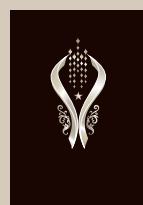
# THE CONCEPT & DESIGN STORY



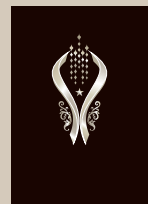
# *design*

... IS NOT JUST ABOUT APPEARANCE BUT  
EXPERIENCE TOO

A true expression of luxury, limitless vision and futuristic ambition, it represents an imposing retail landscape and an awe-inspiring hospitality experience which sets itself apart. More than a masterpiece, Elan Imperial is an example for teamwork of the world's best, a new benchmark of commercial realty and a representation of Indian realty's growth.



THE IDEA  
OF THE ICON



## THE MASTER CREATORS BENOY



*“Perfection achieved is a job done.”*

Mr. Mike Wilson MacCormack,  
Design Director, BENOY

By the icons, for the icons,  
Elan Imperial is conceptualised by  
the most famed experts in  
architecture, interior design,  
branded environments; master  
planning and landscape  
architecture - BENOY.  
The team of the world's most  
acclaimed experts known for widely  
revered creations across the globe  
have created this never seen before  
experience which will take the  
concept of retail a few levels up.









THE FINEST OF RETAIL









A HALLMARK OF  
SPECTACULAR AND  
DAZZLING  
EXPERIENCE

*Retail Revolution Starts Here*











ARTISTIC IMAGE

# *retail*

NOT JUST A COMMERCIAL  
DESTINATION, BUT A FUTURISTIC MASTERPIECE

The apex of retail is achieved.

Elan Imperial leaves behind the prevailing concepts of retail to become a hallmark of spectacular and dazzling experience. A supreme architectural feat achieved by BENOY through Elan Imperial sets an example for the future. It is not just a retail space, but a destination to be immersed in for an elevated luxury experience.

A grand entrance running across the Sector Road offers smooth arrival.



**A BENCHMARK  
RETAIL**









EMM  
THE FUTURE

ARTISTIC IMAGE

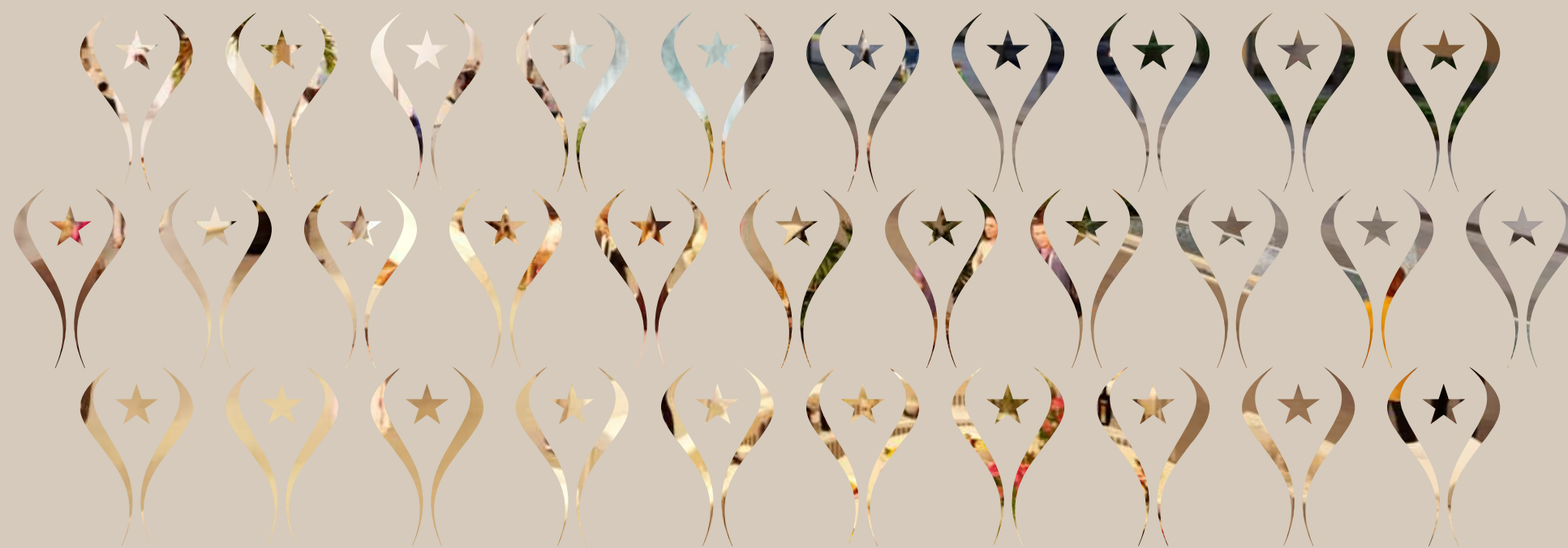








LEISURE & ENTERTAINMENT





ELAN IMPERIAL  
OPENS THE DOORS TO  
AN EXTRAORDINARY

*Leisure & Entertainment Haven*









# *leisure & entertainment*

ENHANCED AND REVOLUTIONISED EXPERIENCES

This exclusive zone is meticulously conceptualised where every aspiration will be taken care of and interactions will flourish. There is no limit to what experiences it will offer - inviting you to taste the most distinct flavours from around the world and welcoming you to witness the most charismatic cinema.



THE WORLD OF  
ABSOLUTE AMUSEMENT





# A GASTRONOMIC JOURNEY THROUGH DIVERSE FOOD COURT





## A FEAST FOR YOUR SENSES AT GOURMET RESTAURANTS



FINE DINING  
BARS & BREWERIES  
CAFES & ICE CREAM PARLOURS  
CANDY KIOSKS



IMAGE USED IS FOR REFERENCE PURPOSE ONLY



IMAGE USED IS FOR REFERENCE PURPOSE ONLY

A luxurious, unwinding experience at Elan Imperial is no less than a wonder, interspersed with spectacular views, refined service and delicious flavours.



AN EXHILARATING  
EXPERIENCE  
THAT IS SECOND  
TO NONE

*The Gaming Arena*







A dedicated entertainment arena delivers the finest and most exciting experiences. This one of a kind zone offers bowling, arcade games, VR gaming, cricket, and many more gaming options.



A NEW DIMENSION  
IN ENTERTAINMENT  
THAT IS DISTINCT

*The Ideal Cinematic Haven*



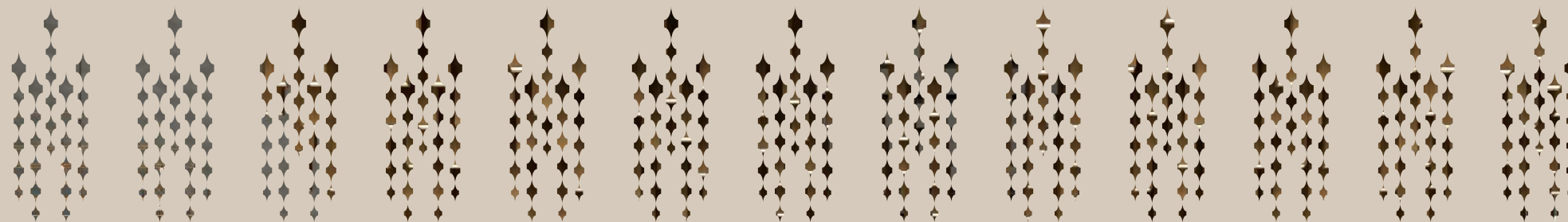


IMAGE USED IS FOR REFERENCE PURPOSE ONLY

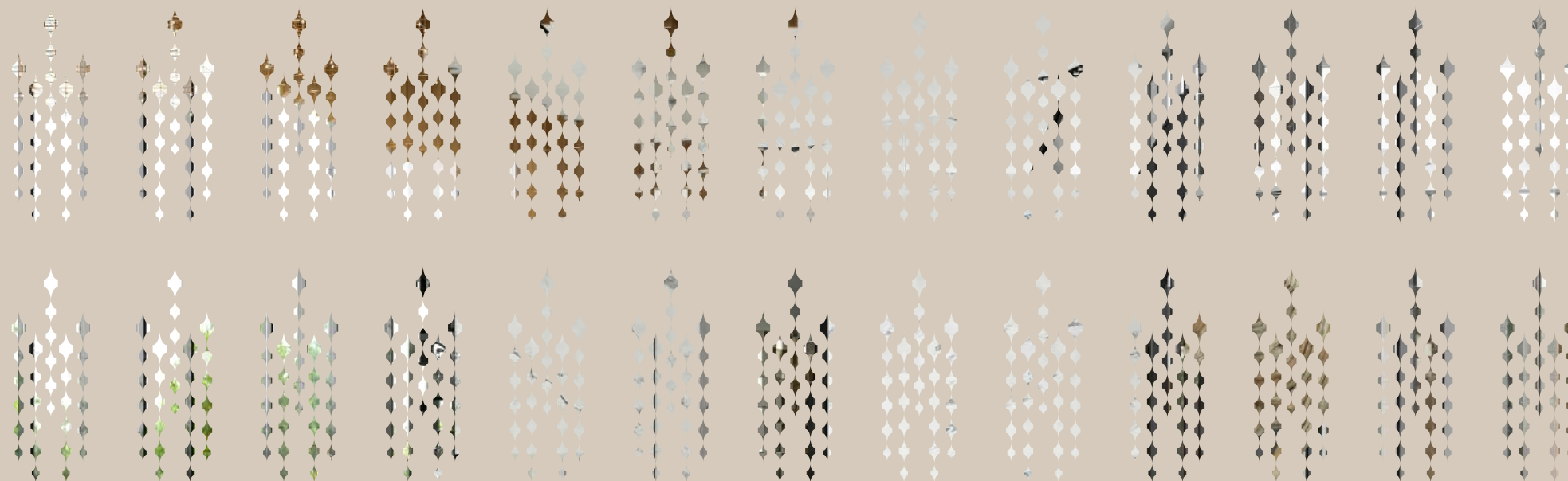


# THE CLASSIC CINEMATIC EXPERIENCE





HOTEL BY WORLD RENOWNED GROUP









TO CROWN  
THE LUXURIOUS CONCEPT  
OF ELAN IMPERIAL,  
THERE IS A 5-STAR HOTEL

*A Hospitality Masterpiece*







# hotel

ELEVATING THE EXPERIENCE  
WITH EVERY STAY

This elite hospitality endeavour will feature branded residences & suites.

This grand hotel, conquering the skyline of Gurugram, impactfully stands with a prominent frontage.

A dedicated arrival for the hotel at the base of the tower welcomes guests to the world of luxurious hospitality



THE WORLD OF  
WONDERFUL  
HOSPITALITY



Rooms &  
Suites



Discover the world's best hospitality right from arriving at one of the grandest drop-offs to exploring the most luxurious lobby. Experience flawless hospitality offered in well-appointed Rooms & Suites.

An unwinding experience awaits through its spa, wellness and fitness centre.

REMARKABLE  
EXPERIENCES





IMAGE USED IS FOR REFERENCE PURPOSE ONLY

FINE DINING  
ALL DAY COFFEE SHOP  
THE BAR LOUNGE  
GRAND BALLROOMS



IMAGE USED IS FOR REFERENCE PURPOSE ONLY

A remarkable banqueting experience awaits. The wide choice of venues and well-planned spaces make a grand statement for every kind and size of event.



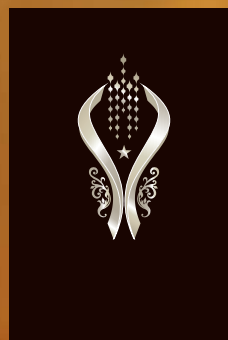


## THE WORLD OF PEACE & TRANQUILITY

A chance to escape to a world of peace and tranquility. The Spa offers opulence and serenity along with scenic views of the city's horizon. The comprehensive offerings at this state-of-art spa include goal oriented sessions for absolute wellness. One can also enjoy at the sauna, steam room, thermal showers and swimming pool.



# THE ASSOCIATES





# BENOY

WORLD RENOWNED ARCHITECT  
(UK BASED)

THE BEST IN DESIGN & ARCHITECTURE



**The Chanakya**  
New Delhi, India



**Jewel Changi Airport**  
Singapore



**Ferrari World**  
Abu Dhabi, UAE

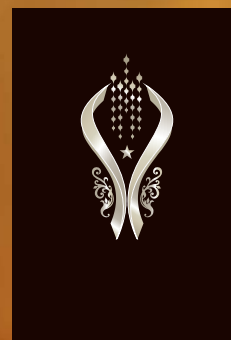








# FLOOR PLAN







LOWER GROUND FLOOR PLAN





GROUND FLOOR





FIRST FLOOR





SECOND FLOOR





THIRD FLOOR





FOURTH FLOOR





FIFTH FLOOR





ELAN  
IMPERIAL™  
a whole new world

*Thank You*

Disclaimer: All information, images and visuals or sketches including landscaping shown in this advertisement are only an architect's impression, representative images, or artistic renderings and not to scale. Nothing contained herein intends to constitute a legal offer and does not form part of any legally binding agreement and/or commitment of any nature. The company may intend to launch the project in phases completely at their discretion. The company endeavours to keep the information up to date and correct. Recipients/ viewers are advised to exercise their discretion in relying on the information shown/ provided and are requested to verify all the details, including area, amenities, services, terms of sales, payments, price, and other relevant terms independently with the sales team/ company and have a thorough understanding of the same and take appropriate advice prior to concluding any decision for buying any unit(s) in the project. HARERA No.: 15 of 2024 Dated: 21.02.2024 | License no. 60 & 61 of 2013. \*1 Hect. = 2.471 Acres, 1 Acre = 4840 sq. yds. or 4046.86 sq. mtrs., 1 sq. mtr. = 10.764 sq.ft.